



*R.Y.S. Quest* in St Katharine Docks, London, August/September 1921



*R.Y.S. Quest* in St Katharine Docks, London, August/September 1921



Funchal, Madeira. *Quest* and *Gueydon* in the bay. From the road to Caniçal, 18 October 1921



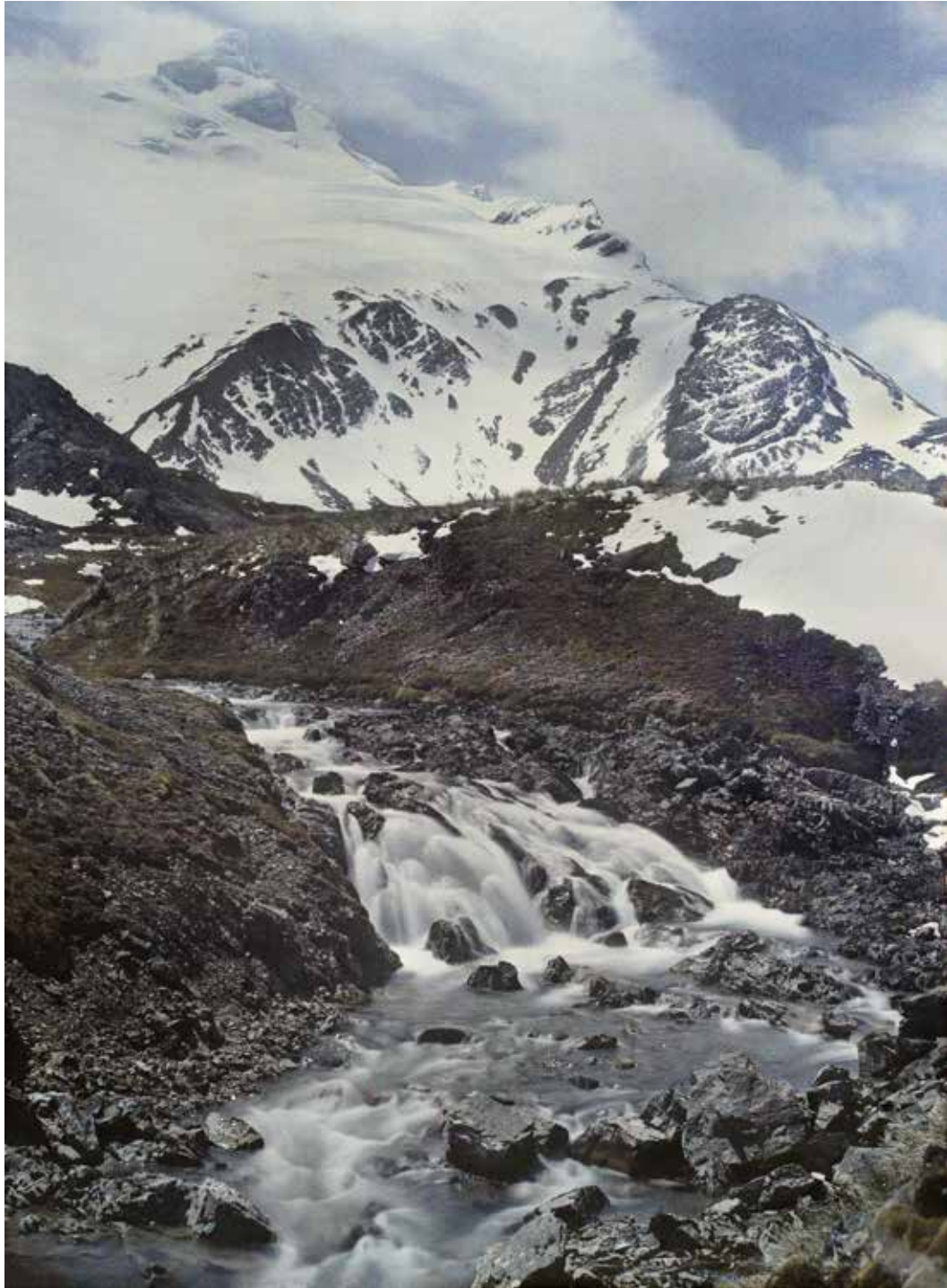
Glacier cliffs and elephant seals. Ice Bay, South Georgia, 10 December 1921



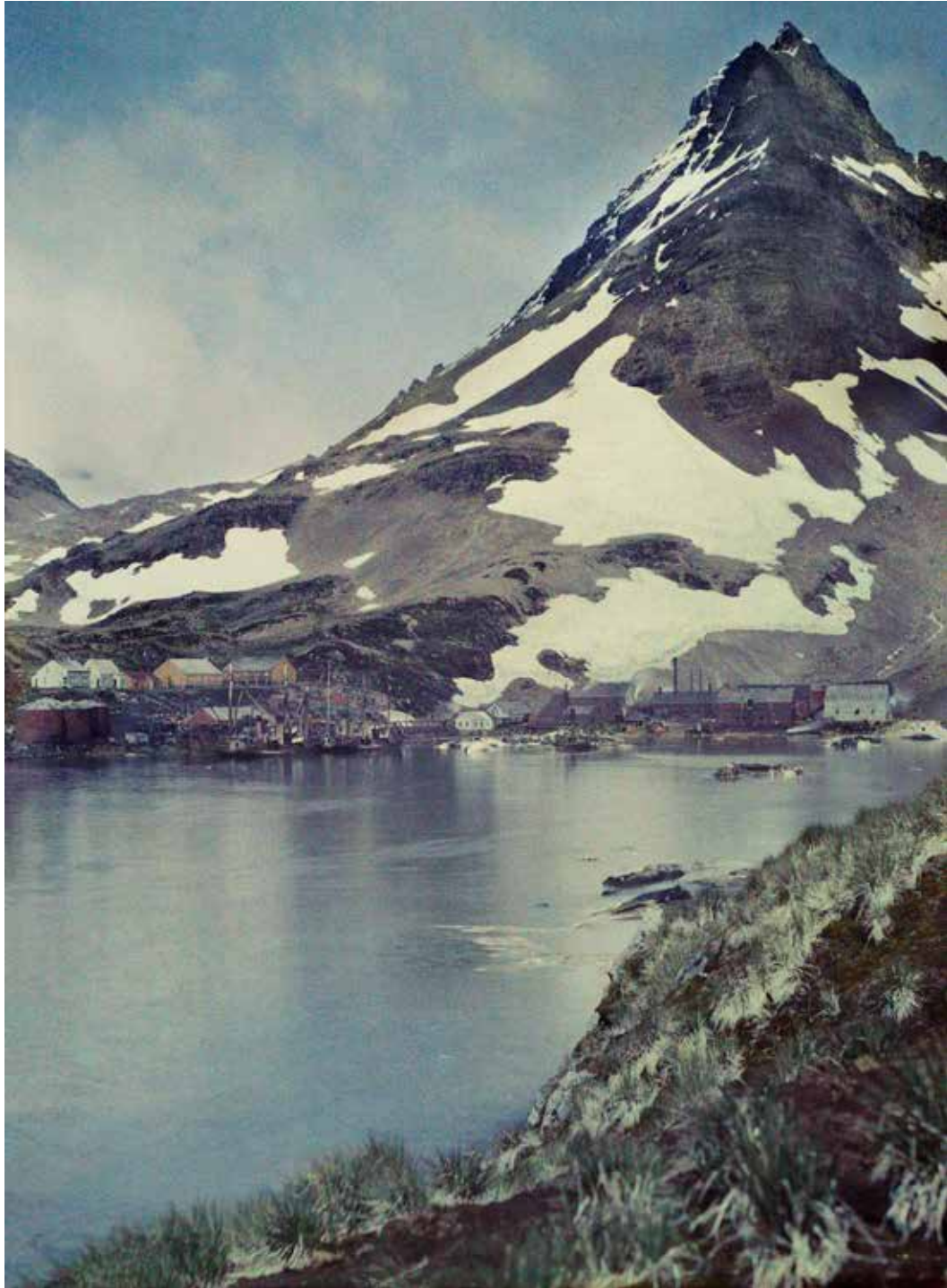
Area around Elsa Bay, South Georgia. Albatross nesting, c. 21 December 1921



Area around Elsa Bay, South Georgia. Albatross nesting, c. 21 December 1921

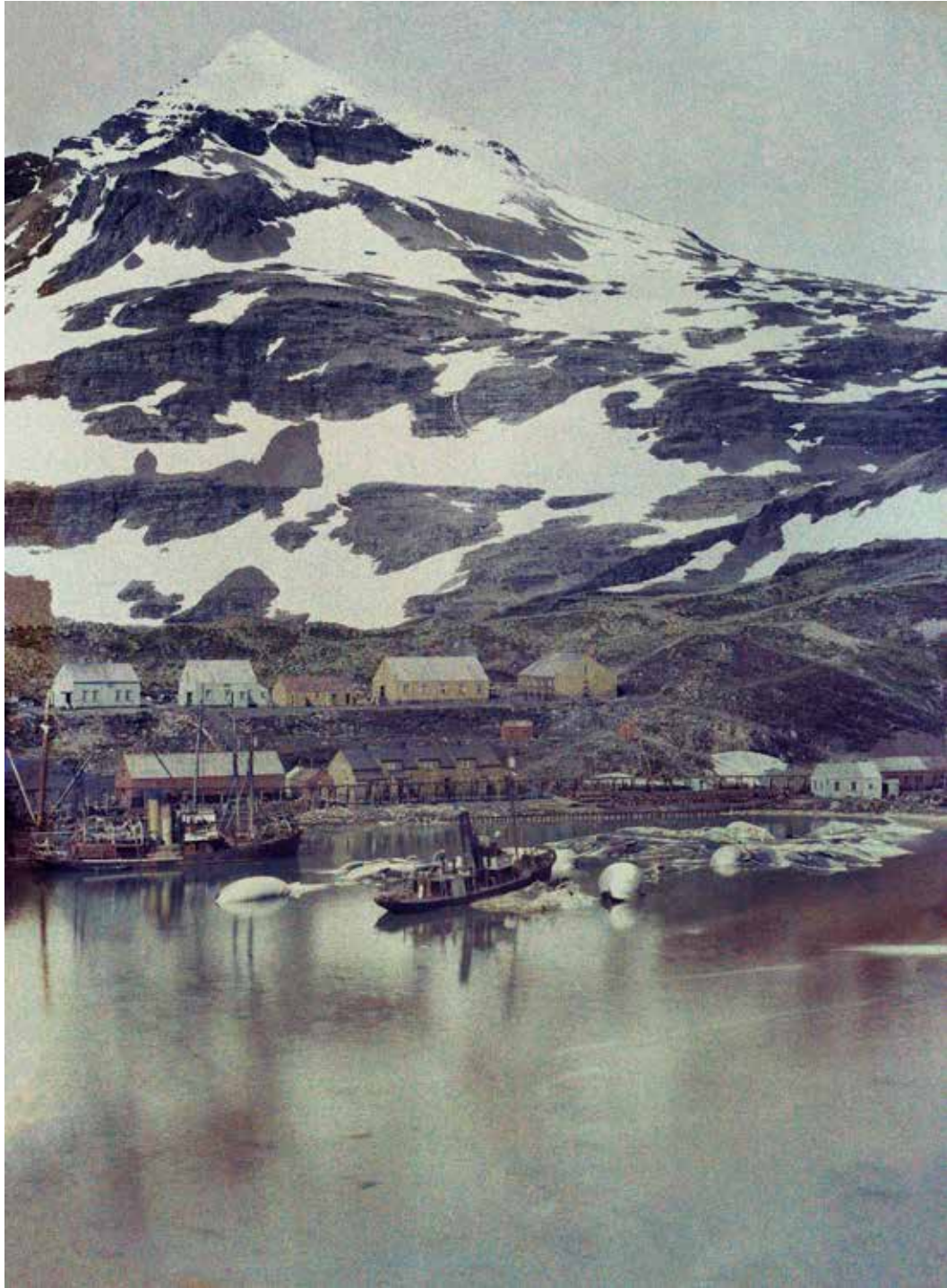


The "miniature waterfall", Elsa Bay area, South Georgia, 27 December 1921

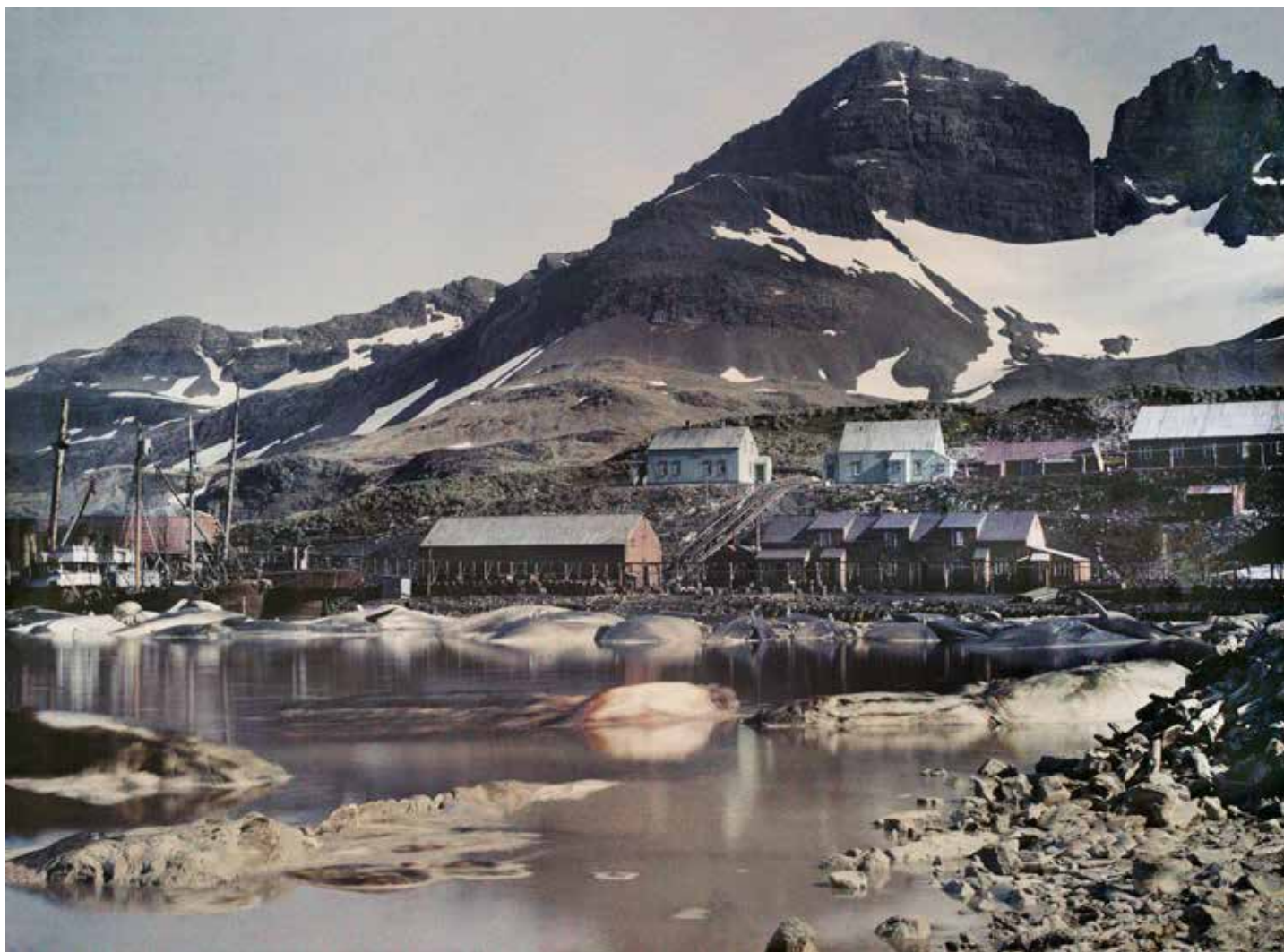


Prince Olav Harbour, South Georgia, 2 January 1922





Whale carcasses in Prince Olav harbour, South Georgia, 2 January 1922



Whale carcasses in Prince Olav harbour, South Georgia, 2 January 1922



The flensing platform, Prince Olav Harbour, South Georgia, 2 January 1922



Three Brothers mountains, Allardyce Range South Georgia, 28 April 1922



Three Brothers mountains, Allardyce Range South Georgia, 28 April 1922



Shackleton's Trail, inland from Leith and Husvik, South Georgia, 28 April 1922



Sunset over the mountains, inland South Georgia, 28 April 1922

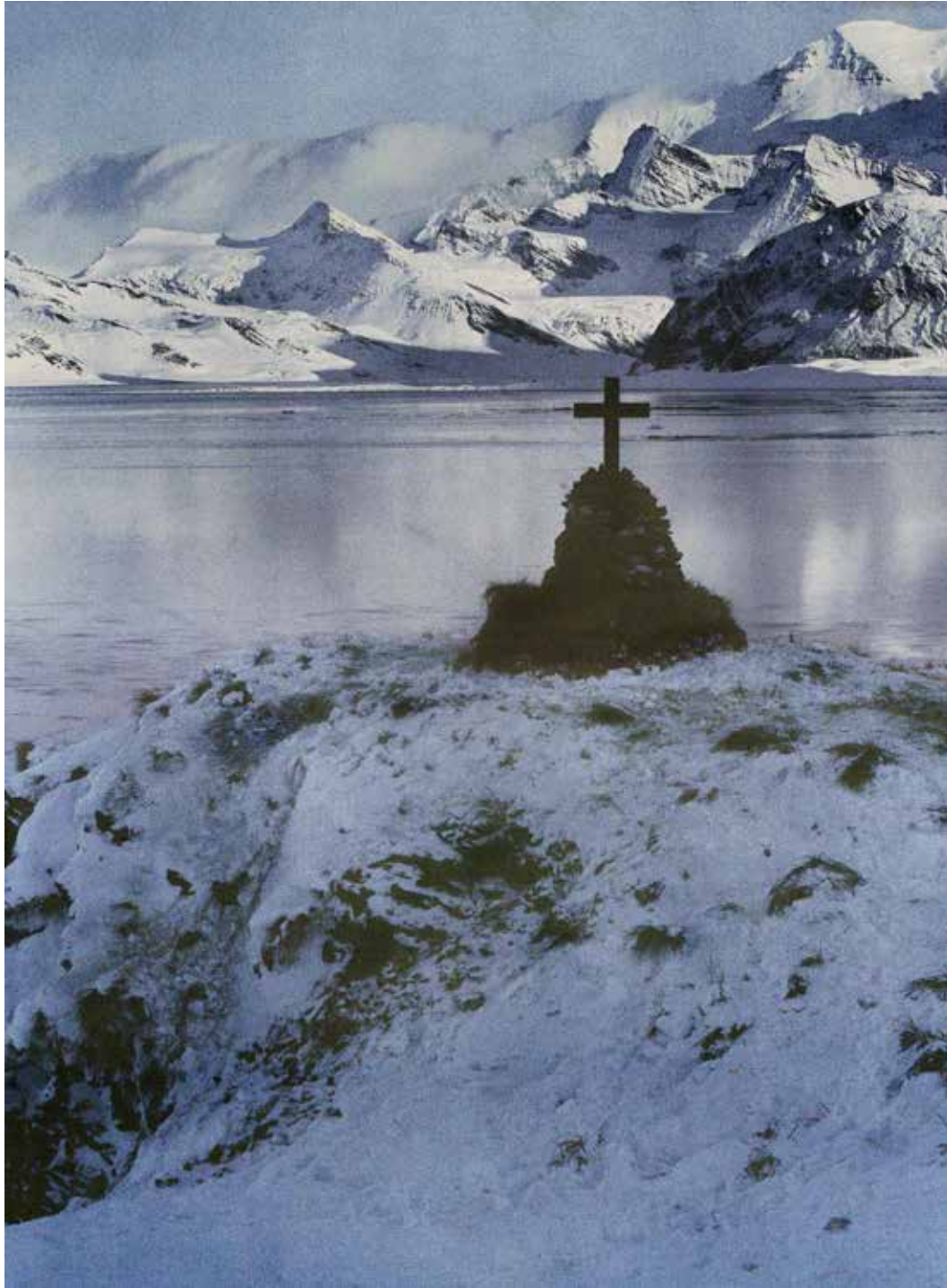


Crew of *Quest* at Shackleton's cairn, Hope Point, King Edward Cove, South Georgia, 5 May 1922





Shackleton's cairn and view across King Edward Cove, South Georgia, 5 May 1922



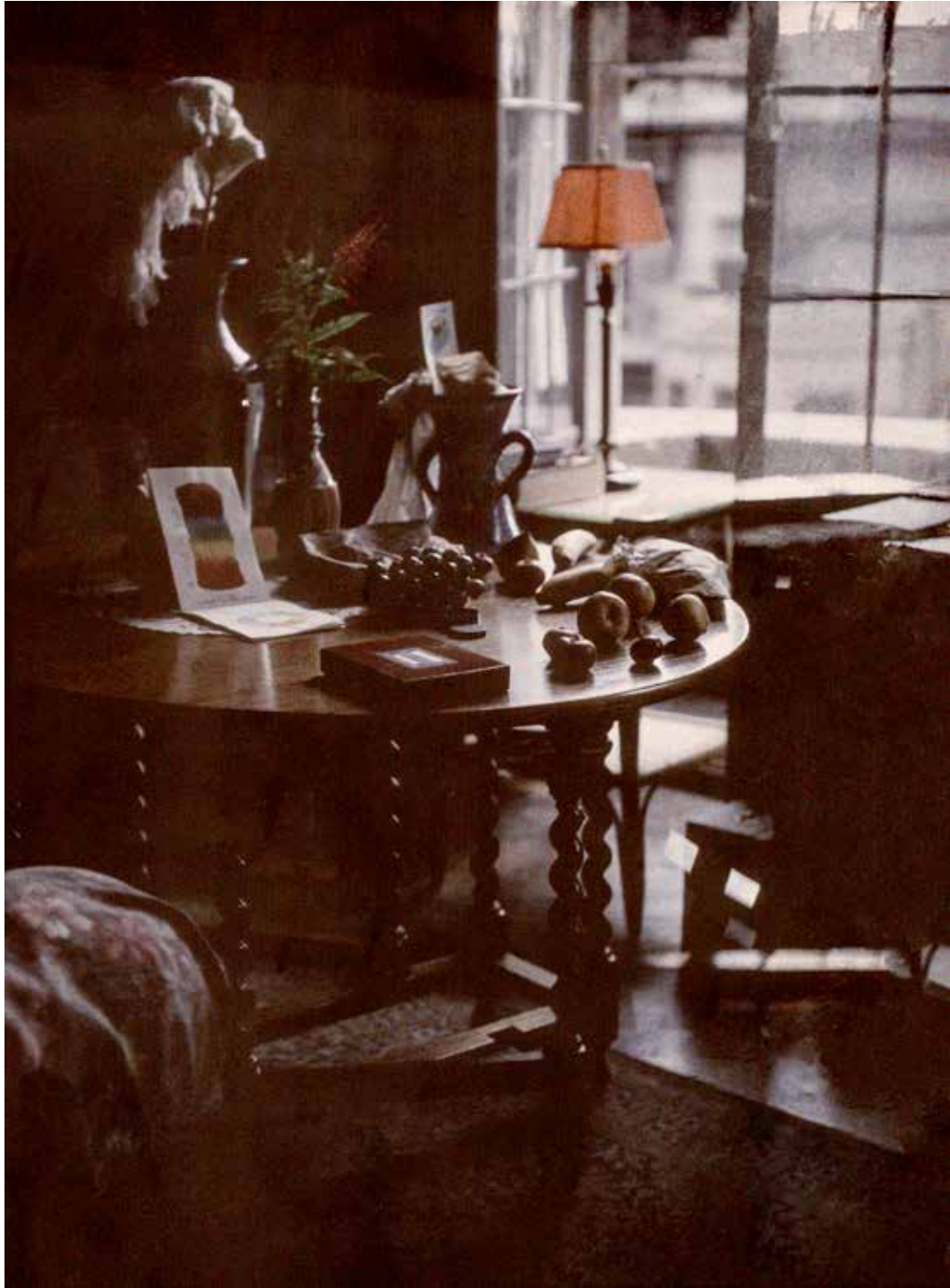
Shackleton's cairn and view across King Edward Cove, Mount Paget in the distance, South Georgia, 5 May 1922



6 May 1922, Shackleton's grave and wreaths laid on behalf of Lady Shackleton and her children, and Mr and Mrs John Quiller Rowett. Grytviken, South Georgia.



Interior. Probably London, about August 1921



Interior. Probably London, about August 1921